



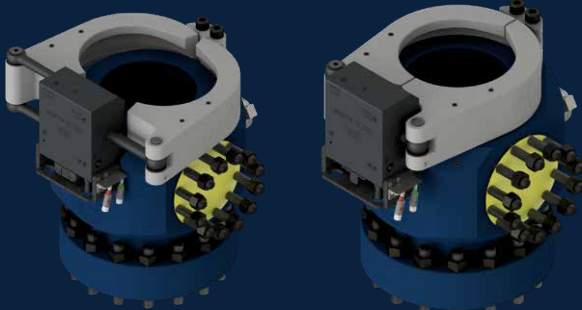
ENERGY SERVICES & TECHNOLOGY CORP.

ORION Hydraulic Clamp

The ORION Hydraulic Clamp was designed to increase the simplicity and safety surrounding Bearing Assembly and Accessory installation and removal. Remotely operated, the User is provided with simplistic Open and Close indicators. The clamp and control panel design has no electrical components allowing it to be placed in Zone 1 areas. In the event of any failure issues with ORION, it fails in the closed position for additional safety.

With **NO** manual backup required, **WHY** settle for anything less in your Hydraulic Clamp?

- ✓ Improves Safety
- ✓ Open & Closed Indicators
- ✓ Remotely Operated
- ✓ No Increase in Height
- ✓ Easy to Use
- ✓ API 16RCD Monogrammed



Open

Closed



Control Panel



Specification and Dimensions

Operating Parameters

TITAN 5 Body

Max Working Pressure – Static	5,000 psi (34,474 kPa)
Maximum Temperature	250° F (121° C)
Minimum Temperature	-20° F (-29° C)

Physical Data

TITAN 5 Body with ORION Hydraulic Clamp*

Flowline Flange	Studded
Connection	7 1/16" 5M
MPD Flange	Studded
Connection	4 1/16" 5M
Hole Fill Flange	Studded
Connection	2 1/16" 5M
Max Width in Closed Position	35.4" (900 mm)
Max Width in Open Position	32.7" (830 mm)
Height without ARES1578 Installed	37.0" (940 mm)
Height with ARES1578 Installed	39 5/8" (1,006 mm)

* only fits TITAN 5 Bodies

ORION Control Console

Power Source	Air / Pneumatic (no electrical components)
Dimensions	20 7/16" x 18 7/16" x 22 1/4"
(L x W x H)	(520 mm x 468 mm x 565 mm)

Size Options (RCD Body and Hydraulic Clamp Assembly)

Size/Pressure	11" 5M	13 5/8" 5M
Max. Thru Bore	11.0" (279.4 mm)	13 5/8" (346.1 mm)
Bottom Flange	Rotating	Rotating
Assembly Weight	3.273 lb. (1,485 kg)	3,487 lb. (1,582 kg)