

# Bey★nd

ENERGY SERVICES & TECHNOLOGY CORP.

A woman and a man are looking at a laptop screen in a server room. The woman is on the left, smiling, and the man is on the right, looking at the screen. The background shows server racks and a blue-tinted environment.

**MPD**  
**Engineering Services**

[www.beyondmpd.com](http://www.beyondmpd.com)

# B.E.S.T. MPD Engineering Services

Beyond prides itself on delivering top-tier MPD products, on-site supervision, and engineering services. This includes comprehensive technical support and a team of experienced engineers to assist with all aspects of MPD well construction, planning, operations execution, and optimization services. Using proprietary software, Beyond is committed to providing its customers with cutting-edge solutions to meet their MPD needs. Our skilled engineers have provided support to clients across North America, Europe, Africa, and Asia.

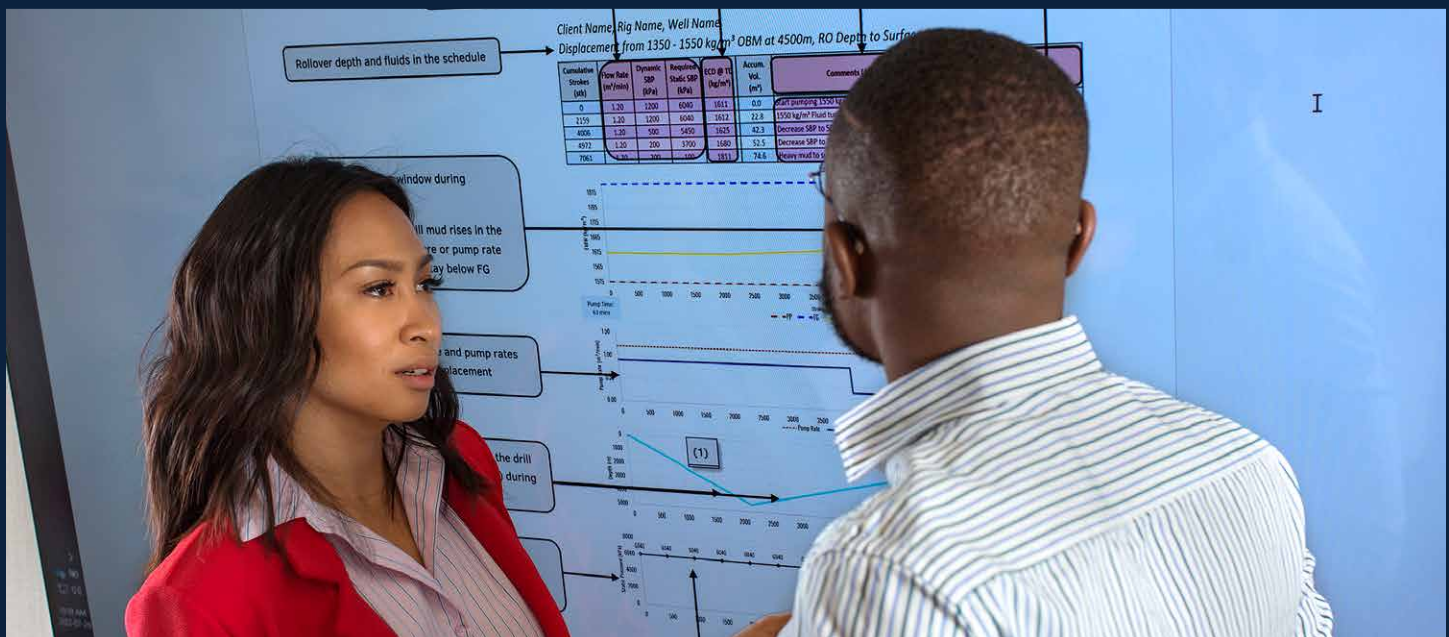
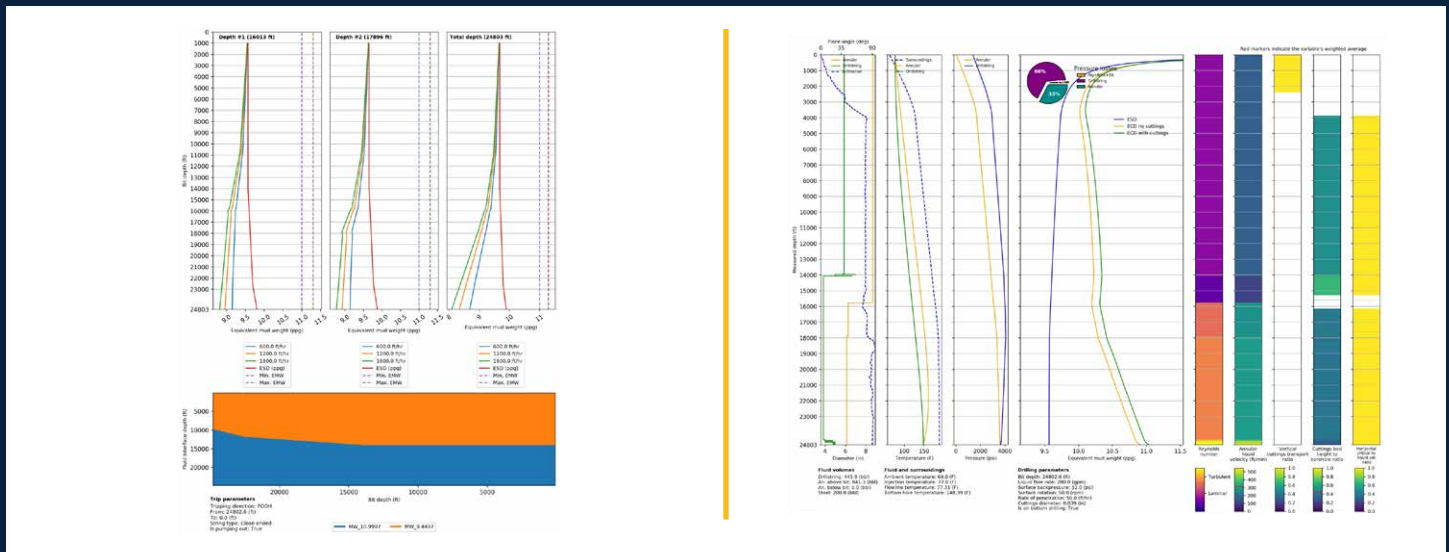
## MPD Engineering Services

MPD feasibility analysis	Mud rollover and cementing schedules in MPD mode
MPD programs	Mud density and rheology overview
Equivalent circulating and static density analysis	End of well reports
Swab and surge analyses	Real-time operations monitoring and support or on-site Engineering



# MPD Engineering Experience

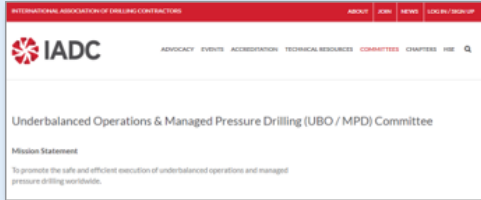
Very narrow window operations	Flow drilling and multiphase operations
Well instability	Drilling optimization (ROP optimization, pressure-related events mitigation, etc.)
Salt water flow issues	HPHT operations in deep wells (depth > 30,000' or 8,000 m)
Horizontal drilling in different pressure profile zones	Cementing in MPD mode



# Full Service MPD Engineering

<b>MPD Quick Look</b>	How can MPD solve drilling problems or improve performance?
<b>Rig Survey</b>	A rig survey assesses if the rig is ready for Managed Pressure Drilling (MPD) by evaluating equipment compatibility, safety, training, workflow adjustments, compliance, and cost-effectiveness. It ensures readiness for MPD's technical and regulatory demands while optimizing efficiency and reducing risks.
<b>MPD Program</b>	Well design to meet MPD Objectives, MPD Procedures, HSE/Operational Considerations, and Well Control/Well Integrity Review
<b>Job Execution</b>	24/7 Support to provide the following at any time <ul style="list-style-type: none"><li>• Drilling Hydraulic Models</li><li>• Mud Rollovers</li><li>• Tripping Plans</li><li>• Formation Evaluation Tests</li></ul>
<b>End of Well Analysis</b>	Formation assessment (actual drilling window observed during the operation), lessons learned, opportunities for improvement

# MPD Engineering Services



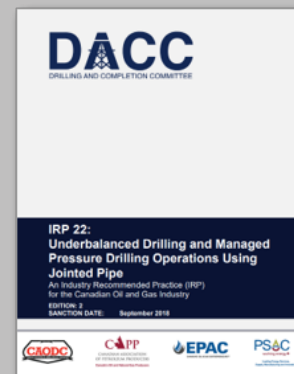
## Technical Support

We pride ourselves in offering the best in class MPD Products and onsite MPD Supervision & Engineering. As part of our MPD portfolio of products, we supply MPD Technical Support and Engineering Services with an experienced team of Engineers. **With Members on DACC, IADC, APEGA, SPE, and IRP.**

## Real-Time Operations Centre (RTOC)

As part of our technical support offering, we provide a Real-Time Operations Centre (RTOC) where Engineers and experts monitor drilling operations.

Our RTOC provides 24/7 support to all MPD Operations, ensuring our MPD Packages as complemented with the best technical and engineering plan for the operator.



## MPD School & Training

Beyond Energy is dedicated to providing exceptional service to its clients, including training its field staff and engineers on MPD 100 and MPD 101. We believe that clients with comprehensive training can understand the full advantages of MPD, leading to informed decisions regarding their operations.



# MPD Engineering Services

## Global Expertise

Beyond prides itself on delivering top-tier MPD products, on-site supervision, and engineering services. This includes comprehensive technical support and a team of experienced engineers to assist with all aspects of MPD well construction, planning, operations execution, and optimization services. Using proprietary software, Beyond is committed to providing its customers with cutting-edge solutions to meet their MPD needs.



## Local Knowledge

We pride ourselves on our ability to combine our global experience with local knowledge to deliver customized solutions for our clients.

## Commitment to Quality

We are committed to delivering high-quality engineering solutions equipped with the latest technologies and tools to ensure we can provide innovative and efficient solutions for every project we undertake.



# Publications and Industry Participation

## MPD Case Studies

**V1: EFFECTIVE USE OF MPD REDUCES DRILLING FLUID DENSITY AND INCREASES ROP WELL-TO-WELL ON 10 WELL PAD**



**V2: EFFECTIVE USE OF MPD REDUCES DRILLING MUD WEIGHT AND INCREASES ROP BY 69% ON 9 LATERALS OFF A SINGLE PAD**



**MPD AND WELLBORE STRENGTHENING TURNS A NEGATIVE DRILLING WINDOW IN A DEPLETED FIELD, EXTENDED REACH INFILL LATERAL INTO A SUCCESS**



**THE NOVEL APPLICATION OF UTILIZING MPD AND BRINE IN HPHT FORMATIONS**



**The Team at Beyond is committed to contributing to the industry and is proud to announce the following publications:**

- Lead Author for SPE-200508-MS: “Three Mud System Allows Successful Completion of >22,000’ Slimhole with 0.5 ppg Window through MPD Optimization of Trip Procedure”
- Contributing Author for SPE-205020-PA: “Prediction of Reservoir-Kick Effect and Its Management in the Managed-Pressure-Drilling Operation”
- Lead Author SPE-202179-MS: “Nitrogen-Based Back Pressure Unit Modernizes Managed Pressure Drilling Operations”
- Lead Author for SPE 206397. “Systematic Build-Up Pressure Analysis Advances Accurate Fingerprinting of Formation Breathing in Gas Wells ”



We do **Managed Pressure Drilling.**

