

## Dual Upper Stripper Assembly (DUSA)- 3078 / 3090

The Dual Upper Stripper Assembly is designed, manufactured, as per API 16RCD specifications and guidelines. This is a significant component in Beyond Energy's Rotating Control Device (RCD) product lines allowing for installation of a secondary Sealing Element for added safety and wellbore containment.

### Applications

- Managed Pressure Drilling
- Underbalanced Drilling
- Pressurized Mud Cap Drilling
- Containment of wellbore returns
- Geothermal wells
- Land and Offshore



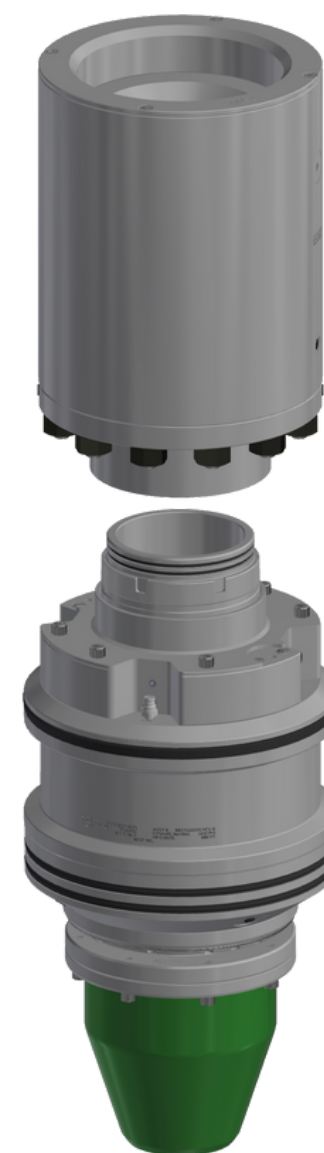
**ARES 3078 DUSA**



**ARES 3090 DUSA**

### Features and Accessories

- 5000 psi Static Rated
- 7 3/4" passthrough (3078)
- 9" passthrough (3090)
- NACE-MR0175 Compliant



**POSEIDON 3078 DUSA**



**POSEIDON 3090 DUSA**

## Dual Upper Stripper Assembly (DUSA)- 3078 / 3090 Specifications

Physical Data		
Size	3078	3090
Maximum Outer Diameter	438.2 mm (17.25 in.)	438.2 mm (17.25 in.)
Pass through Diameter	196.9 mm (7.75 in.)	228.6 mm (9.0 in.)
Weight*	296 kg (653 lbs.)	285 kg (628 lbs.)
Height	660.4 mm (26.0 in.)	629.9 mm (24.8 in.)
Total Height installed in TITAN 5	11 in. 5M or 13 <sup>5</sup> / <sub>8</sub> in. 5M 1808.3 mm (71.2 in.)	11 in. 5M or 13 <sup>5</sup> / <sub>8</sub> in. 5M 1902.2 mm (74.9 in.)

\*to obtain total weight, add to the ARES or POSEIDON weight

Operating Parameters		
Pressure Ratings		
Static Pressure Rating	34,473 kPa	5,000 psi
Dynamic Pressure Rating	20,684 kPa	3,000 psi
Maximum RPM	200 RPM	
Maximum Temperature	85° C	185° F
Minimum Temperature	5° C	41° F
Stripping Speeds vs Pressure		
Stripping Speeds vs. Pressure	10 m/min. @ 7,000 kPa	33 ft/min. @ 1,015 psi
	20 m/min. @ 6,000 kPa	66 ft/min. @ 870 psi
	30 m/min. @ 5,000 kPa	100 ft/min. @ 725 psi
Maximum Stripping Speed	30 m/min.	100 ft/min.